

# Primate Society of Great Britain Conservation Cause 2017



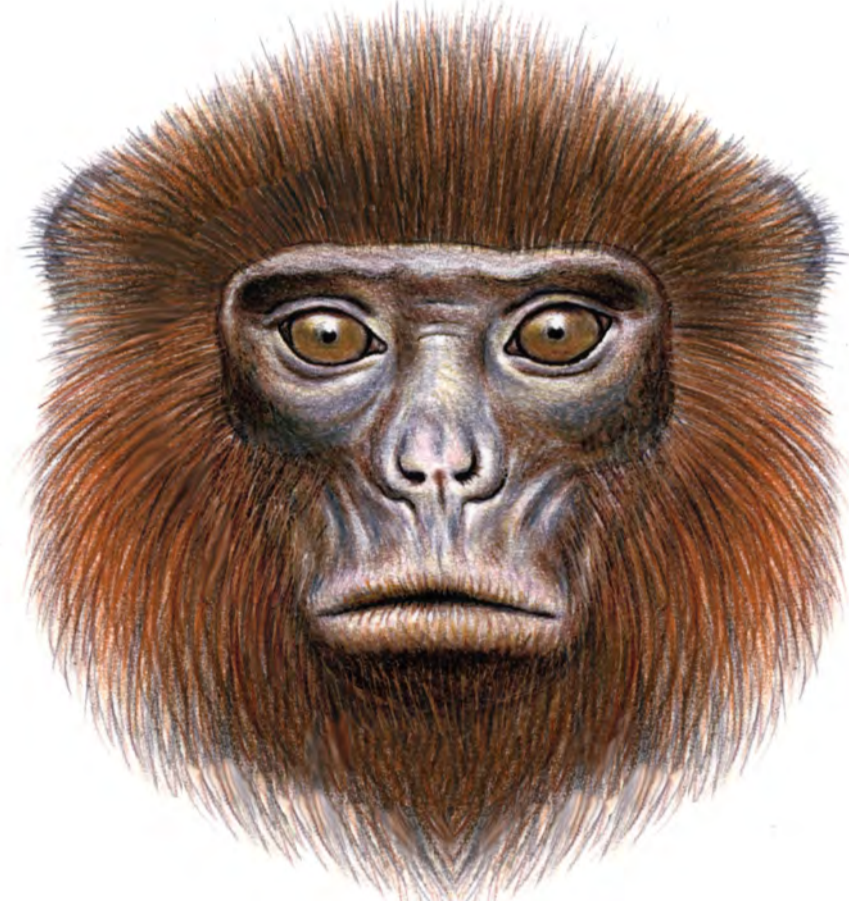
# WAPCA

Primate Society of Great Britain

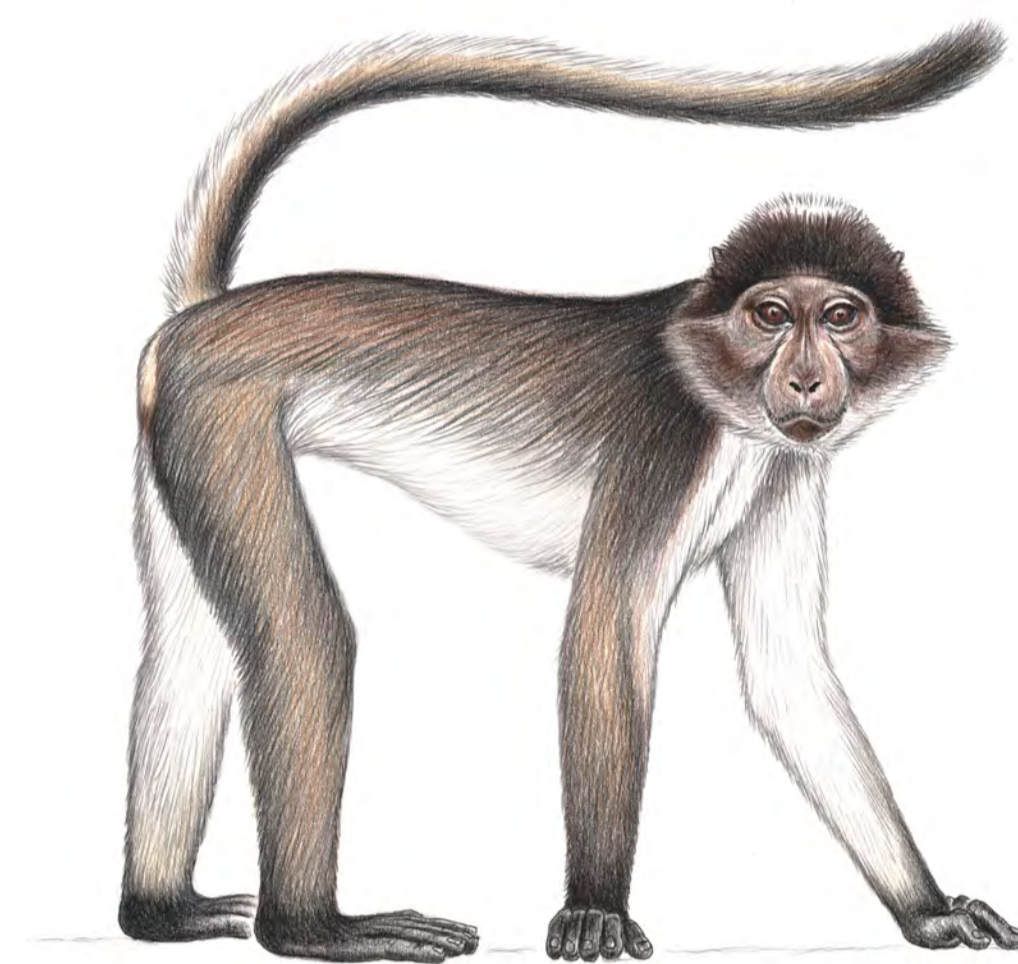


## WEST AFRICAN PRIMATE CONSERVATION ACTION

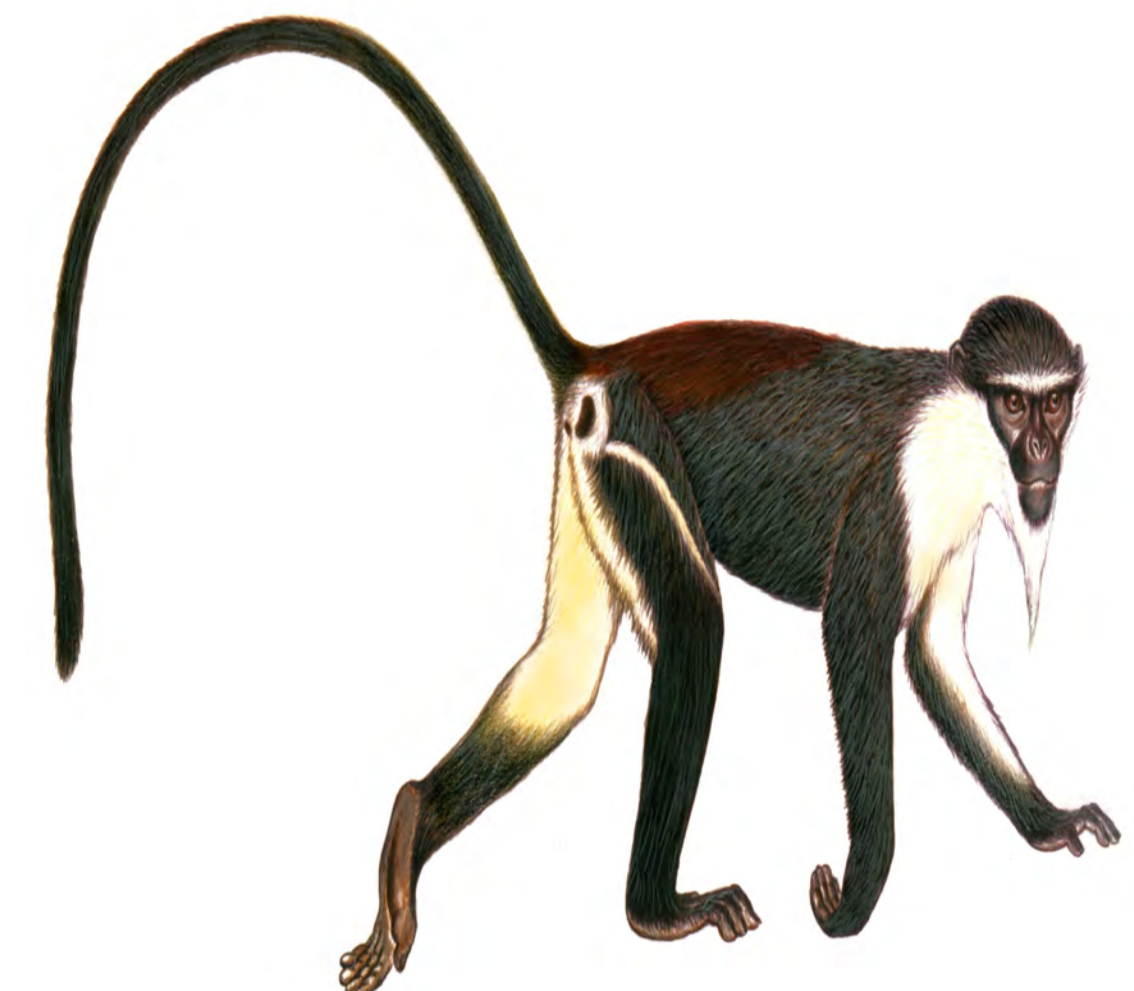
WAPCA is a non-government organisation supported by zoos, funding organisations and donors, working to safe guard the future of primates and their habitats in Ghana and Cote d'Ivoire. WAPCA has three focal primate species – all of which are classified as **Critically Endangered**.



**Miss Waldron's Colobus,**  
*Ptilocolobus waldroni*



**White-naped Mangabey,**  
*Cercocebus lunulatus*



**Roloway monkey,**  
*Cercopithecus roloway*

WAPCA operates in two main ways: supporting the genetic diversity of the global captive population by participating in the European Endangered species Programme at WAPCA's Endangered Primate Breeding Centre within Accra Zoo, Ghana; and empowering local communities to protect the last remaining habitats of these three species.

WAPCA believes that for sustainable and effective conservation, local people must be fully engaged. By leading the communities to take responsibility at the decision making level, WAPCA has fostered a holistic approach to conservation by recognising both the needs of the communities and the conservation action necessary for the primates' survival.



Part of the Upper Guinean Biodiversity Hotspot, the Kwabre Forest in Ghana and the Tanoe Forest in Cote d'Ivoire are the last known habitats for the Roloway monkey and Miss Waldron's colobus. Dividing these two forests and countries runs the Tanoe River which WAPCA has been working both sides of since 2012 to protect this vital range.

WAPCA facilitates training and coordination to: (A) Enable the communities to create and run government recognised, democratically elected community natural resource management committees; (B) Establish weekly forest patrol teams and (C) Create and maintain tree nurseries for reforestation activities.

More recently, WAPCA has begun training in alternative livelihoods supporting the community farmers and has initiated proceedings towards a transboundary forest; creating one federated area between the Tanoe and the Kwabre to reduce illegal exporting across the river.

**For More Information Please Visit Our Website: [www.wapca.org](http://www.wapca.org)**

Illustrations courtesy of Stephen Nash